



NTNU – Trondheim
Norwegian University of
Science and Technology

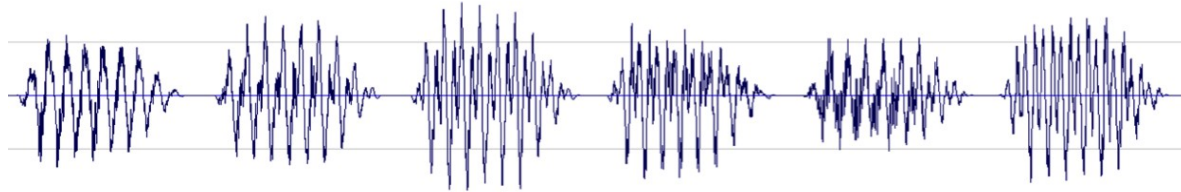
LAC - Paper presentation:
Combining frequency modulation with granular synthesis

Kim Ervik

Øyvind Brandsegg

Granular synthesis

"Synthesising sound based on adding thousand of sonically grains into larger acoustical events"



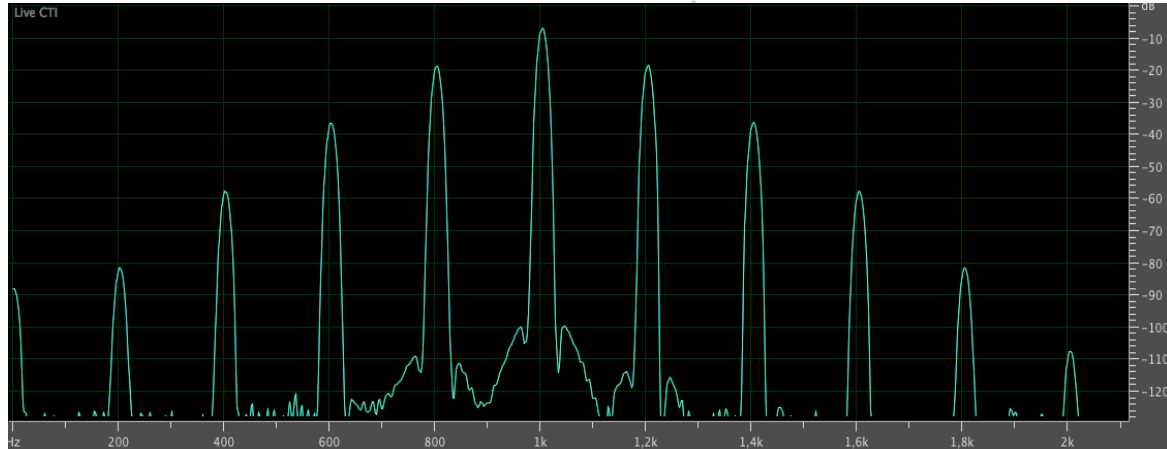
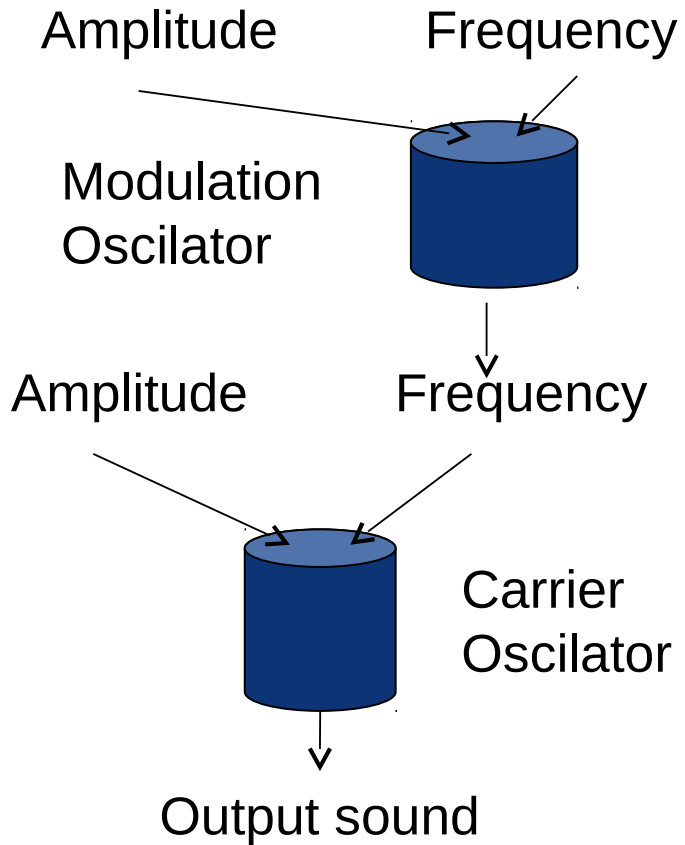
Application

- Independent time and pitch scaling
- Analog synth modeling
- Sound design and sound manipulation
- Granular reverbs and delay effects



NTNU – Trondheim
Norwegian University of
Science and Technology

FM synthesis



$$f_n = f_c \pm n f_m$$

Modulation frequency = Carrier frequency * Ratio
 Modulation amplitude = Modulation frequency * Index



NTNU – Trondheim
 Norwegian University of
 Science and Technology

Pitch in GS

- Grain rate > 30 = Grain rate
- Grain rate < 30 = Grain pitch*

* With some exceptions. For instance if the phase or the reading position of the grain source is modulated, the pitch may be defined by the pitch of the content in the grains. Another exception is if the grain stream is asynchronous. Then the result will be noisy dependent on the random range of the grain distribution.



NTNU – Trondheim
Norwegian University of
Science and Technology

Pitch in FM

- FM ratio 0,5: Percieved pitch one octave bellow
- FM ratio 7/8: Defuse fundamental pitch



NTNU – Trondheim
Norwegian University of
Science and Technology

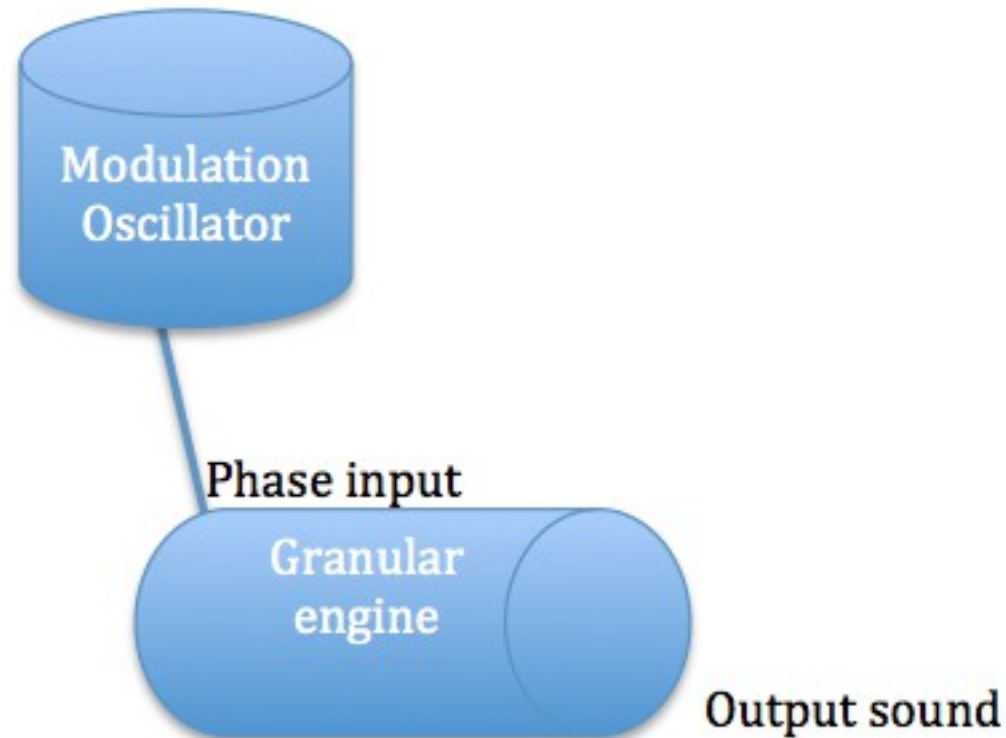
FM in granular synthesis

- Grain pitch modulation
- Grain rate modulation



NTNU – Trondheim
Norwegian University of
Science and Technology

Grain pitch modulation



Grain pitch modulation

Modulation frequency < 30 Hz

- Grain rate < 30 Hz: Vibrato
- Grain rate > 30 Hz: Periodical spectral sweeps
- Transition area (20 – 50 Hz) for both modulation frequency and grain rate



NTNU – Trondheim
Norwegian University of
Science and Technology

Grain pitch modulation

Modulation frequency > 30 Hz

- FM index
- Harmonics of Granular synthesis dominates
- Sidebands emerge from a sub harmonic at 0 Hz



NTNU – Trondheim
Norwegian University of
Science and Technology

Grain pitch modulation

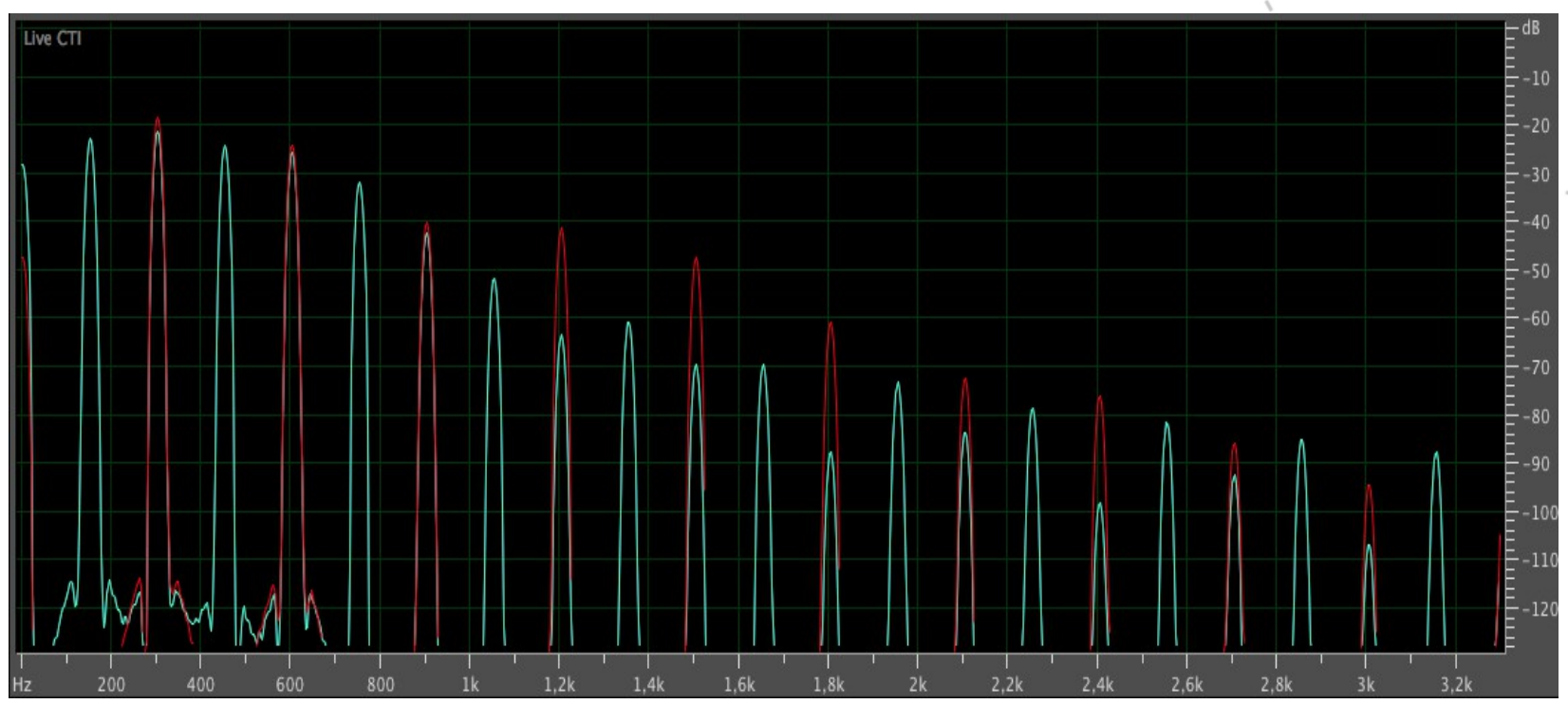


Grain rate: 300 - Grain pitch: 300 - Mod Ratio: 3



NTNU – Trondheim
Norwegian University of
Science and Technology

Grain pitch modulation

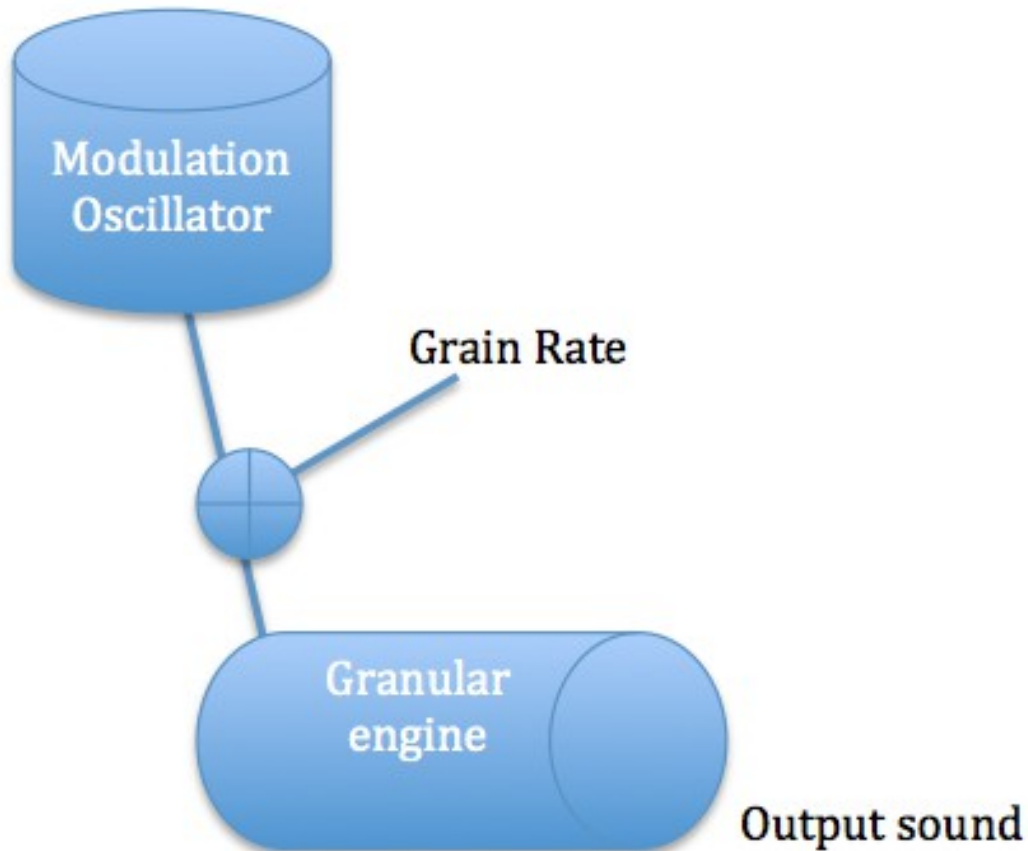


Grain rate: 300 - Grain pitch: 300 - Mod Ratio: 0.5



NTNU – Trondheim
Norwegian University of
Science and Technology

Grain rate modulation



NTNU – Trondheim
Norwegian University of
Science and Technology

Grain rate modulation

- Modulation index > 1
- Modulation index is a measurement of grain displacement within $\frac{1}{\text{grain rate}}$ Seconds



NTNU – Trondheim
Norwegian University of
Science and Technology

Grain rate modulation

- Harmonics from the grain rate in granular synthesis
 - Grain rate as sampling frequency
 - Nyquist: the highest frequency representable is $\frac{1}{2}$ the sample rate.
-
- FM rate 0,4 == 0,6



Combining Grain pitch modulation and grain rate modulation

- Two modulators in pair
- Example: $1/2 + 1/3 = 1/6$



NTNU – Trondheim
Norwegian University of
Science and Technology

Sound examples



NTNU – Trondheim
Norwegian University of
Science and Technology

Conclusion

- Grain pitch modulation
- Grain rate modulation



NTNU – Trondheim
Norwegian University of
Science and Technology